



**Valve 2/2 way - angle seat/process valve  
Normally Open - Flow direction below the  
seat - pneumatically operated**

**21IA4T15GA2-A  
÷  
21IA9T50GA2-A**

**PRESENTATION:**

- High flow rate due to the angle seat configuration.
- Anti-water hammer feature with the fluid entry below the seat.
- Electrical operation is easy with the addition of a solenoid pilot.
- Stainless steel body and corrosion resistant actuator.
- The pneumatic actuator can be rotated through 360 degrees.
- Optical position indicator.
- Internal seals are self adjusting for long life.
- Easily convertible from N.C. to N.O. or double acting.
- Universal mounting - any mounting orientation is acceptable.

**USE:** Automation, Heating, Water, Hot water, Steam (180°C), Aggressive and food fluids

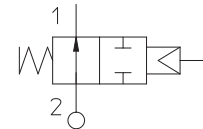
**PIPES:** G 1/2 - G 2

**VALVE FEATURES:**

Fluid Temperature - 40°C + 180°C  
 Ambient temperature - 10°C + 80°C  
 (according to Atex requirements)  
 Viscosity of the fluid max 600 cSt  
 Material Stainless steel AISI series 316  
 Seal PTFE  
 Packing gland PTFE, FKM

**PILOT ACTUATOR FEATURES:**

Fluid Dry Air or lubricated, gas and neutral fluids  
 Fluid Temperature max + 60°C  
 Body Polyamide 66 with 30% glass fibre  
 Gaskets NBR  
 Actuator Ø 70



Pipe ISO 228/1	Code	Ø mm	Kv l/mn	Actuator pilot pressure (bar)		Differential pressure (bar)		Max. allowable pressure PS (bar)	Weight Kg
				min	max	min	max		
G 1/2	21IA4T15GA2-A	15	80	1,5	10	0	(See pressure graph)	40	1,2
G 3/4	21IA5T20GA2-A	20	150						1,3
G 1	21IA6T25GA2-A	25	190						1,6
G 1 1/4	21IA7T32GA2-A	32	340					25	2,2
G1 1/2	21IA8T40GA2-A	40	430						2,5
G 2	21IA9T50GA2-A	50	620						3,7



**CE Approval**

(Pressure Equipment Directive 2014/68/EU)  
for Valve 21IA7..-A ÷ 21IA9..-A

According to Directive 2014/34/EU ATEX  
 II 2G c IIC TX  
 (- 40°C ≤ Tamb ≤ 80°C)

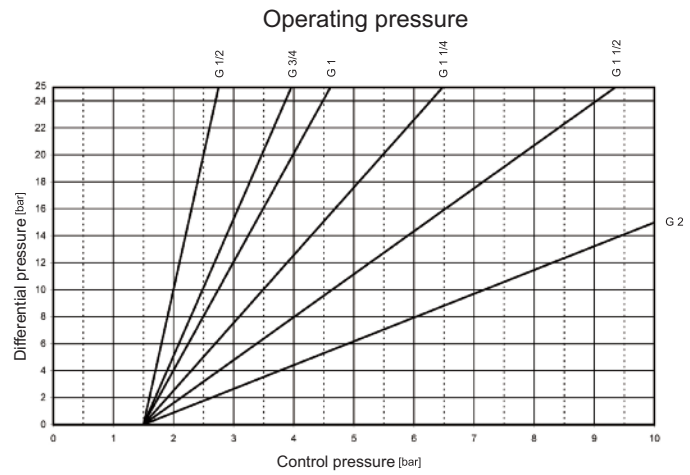
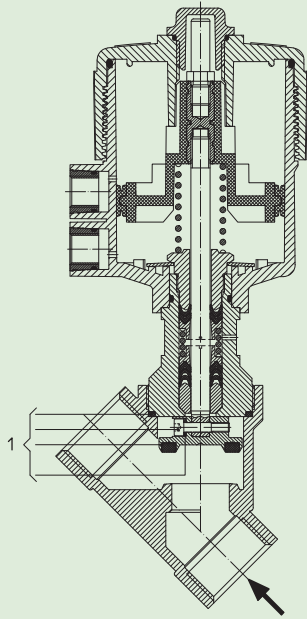
**Note**

Available on request pilot series S.V. 31A2 according to Atex requirements (see catalogue page) | Together with male thread nipple male G 1/4 - G 1/4 | Material compatibility with the fluids to be checked.

The "ODE" reserves the right to carry out technical and aesthetic modifications without prior notice.

## MAINTENANCE KIT:

1.
  - G 1/2 R500045
  - G 3/4 R500048
  - G 1 R500051
  - G 1 1/4 R500054
  - G 1 1/2 R500057
  - G 2 R500060



## DIMENSIONS:

Pipe ISO 228/1	A mm	B mm	C mm	D mm	H mm	L mm	T mm
G 1/2	206,8	SW 27	178,7	15,4	163,3	65	17
G 3/4	211,7	SW 32	188,6	21,9	166,7	75,5	19
G 1	220,1	SW 41	197,8	25,1	172,7	90	21
G 1 1/4	235,9	SW 50	212,3	28,5	183,8	110	24
G 1 1/2	238,9	SW 55	217,0	31,0	186	122	25,2
G 2	247,8	SW 70	229,7	37,5	192,2	151	28,5

