

Total separation solenoid valve 2/2 way N.C. with flow regulation Direct acting - NSF Certified

21D72KRS90-L
÷
21D72KRS90-R

PRESENTATION:

Directing acting S.V. for automatic drink dispensers.
Minimum operational pressure is not required.
The material used and the tests carried out ensure maximum reliability and duration.

USE: Automatic drink dispensers

PIPES: Boiler stub connection Ø12 - Ø 11

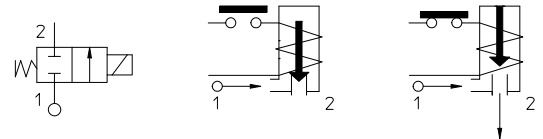
COILS:
8W - Ø 13
BDA - BDS - BSA 155°C (class F)
BDF - BDV 180°C (class H)

MOULDING AND BOBBIN ARE MADE BY 100% VIRGIN MATERIAL.

Ambient temperature:
with coil class F - 10°C + 60°C
with coil class H - 10°C + 80°C



Gaskets	Temperature		Medium
	+ 2°C	+100°C	
S=VMQ (silicone)			Water



Pipe	Code	Max viscosity		Ø mm	Kv l/mn	Power (watt)	Pressure		
		cSt	°E				min bar	M.O.P.D.	
								AC bar	DC bar
Ø12	21D72KRS90-L	-	-	9	*	8	0	0,3	0,3
	21D72KRS90-M								
Ø11	21D72KRS90-R								

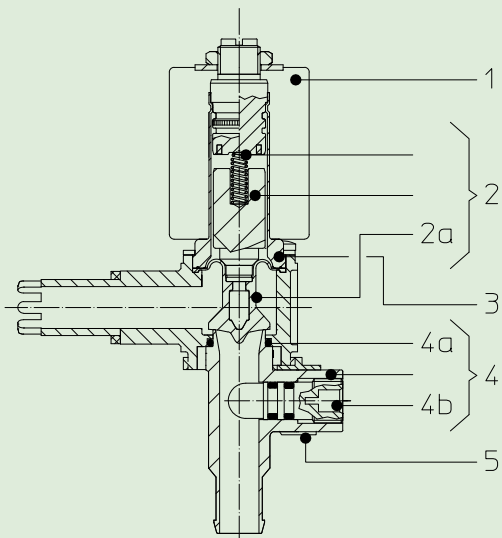
* FLOW RATE WITH HEAD OF 80 mm = 2,5 l/min.

NSF CERTIFIED



MATERIALS:

Body	PSU (Polysulphone)
Lower body	PSU (Polysulphone)
Lower body clamping device	PA (Polyammide)
Armature tube	Brass - UNI EN 12164 CW614N
Fixed core	Stainless steel AISI series 400
Plunger	Stainless steel AISI series 400
Phase displacement ring	Copper - Cu 99,9%
Spring	Stainless steel AISI series 300
Bellow membrane	Standard: S = VMQ On request W = MFQ



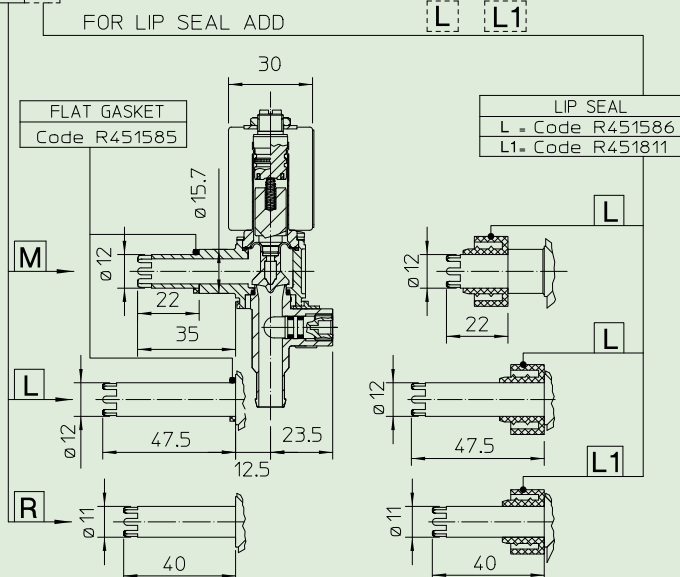
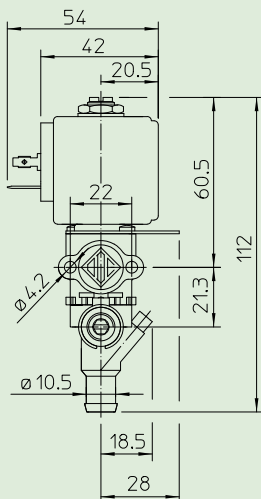
SPARE PARTS:

- | | |
|---|---|
| 1. Coil:
See coils list | 4a. Gasket O-Ring:
Code R990052/S |
| 2. Complete plunger:
Code R452491/S | 4b. Flow setting screw with O-Rings:
Code R452226 |
| 2a. Bellow membrane:
Code R452489/S | 5. Lower body clamping device:
Code R452259 |
| 3. Complete armature tube:
Code R452197 | |
| 4. Lower body assembly:
Code R452492 | KIT:
KR130KRS90-L3=2+3 |

DIMENSIONS:

SOLENOID VALVE CODING WITH ACCESSORIES

2 1 D 7 2 K R S 9 0 - M L



COIL TYPE	POTENZA		
	W ---	Hold VA ~	Inrush VA ~
B	8	14,5	25

Total separation solenoid valve 2/2 way N.C. with flow regulation Direct acting - NSF Certified

21D72RRS90-L

÷

21D72RRS90-R

PRESENTATION:

Directing acting S.V. for automatic drink dispensers.
Minimum operational pressure is not required.
The material used and the tests carried out ensure maximum reliability and duration.

USE: Automatic drink dispensers

PIPES: Boiler stub connection Ø12 - Ø 11

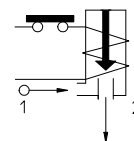
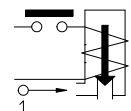
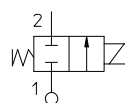
COILS: 12W ED 50% - Ø 10
ICA 155°C (class F)

MOULDING AND BOBBIN ARE MADE BY 100% VIRGIN MATERIAL.

Ambient temperature -10°C + 60°C



Gaskets	Temperature		Medium
	+ 2°C	+100°C	
S=VMQ (silicone)			Water



Pipe	Code	Max viscosity		Ø mm	Kv l/mn	Power (watt)	Pressure		
		cSt	°E				min bar	M.O.P.D.	
								AC bar	DC bar
Ø12	21D72RRS90-L 21D72RRS90-M	-	-	9	*	12 ED 50%	0	0,3	0,3
Ø11	21D72RRS90-R								

* FLOW RATE WITH HEAD OF 80 mm = 2,5 l/min.

NSF CERTIFIED



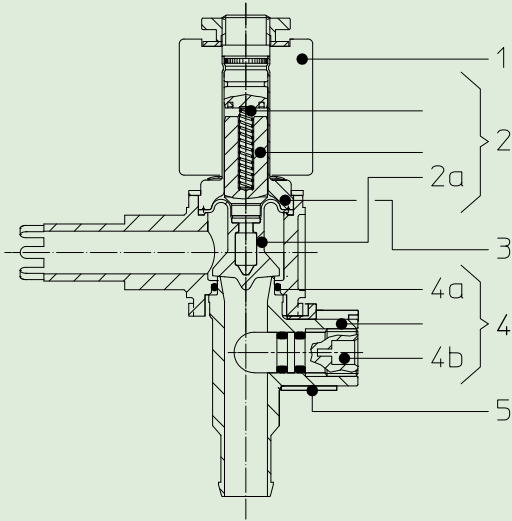
Note

Available on request and with minimum quantities

We reserves the right to carry out technical and aesthetic modifications without prior notification.

MATERIALS:

Body	PSU (Polysulphone)
Lower body	PSU (Polysulphone)
Lower body clamping device	PA (Polyamide)
Armature tube	Brass - UNI EN 12164 CW614N
Fixed core	Stainless steel AISI series 400
Plunger	Stainless steel AISI series 400
Phase displacement ring	Copper - Cu 99,9%
Spring	Stainless steel AISI series 300
Bellow membrane	Standard: S = MVQ On request W = MFQ



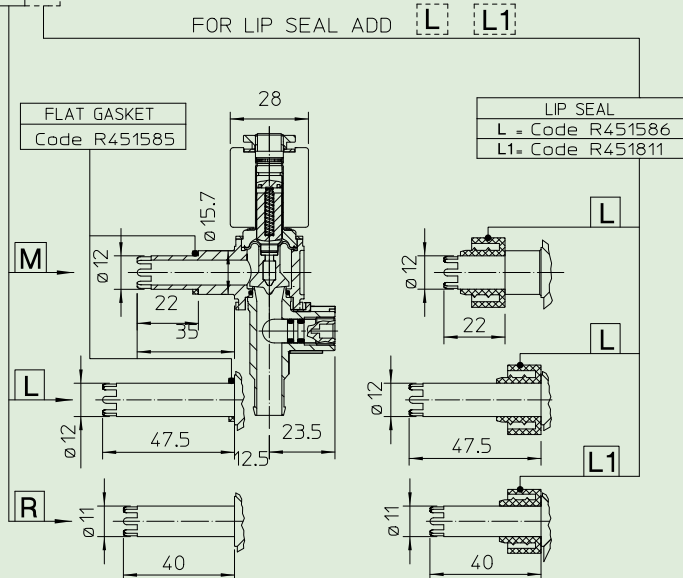
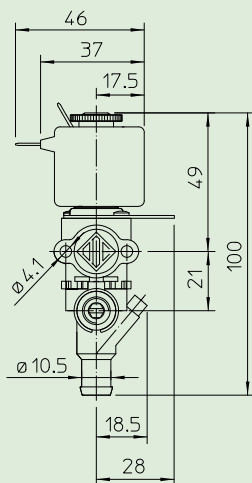
SPARE PARTS:

1. Coil: See coils list	4a. Gasket O-Ring: Code R990052/S
2. Complete plunger: Code R452501/S	4b. Flow setting screw with O-Rings: Code R452226
2a. Bellow membrane: Code R452489/S	5. Lower body clamping device: Code R452259
3. Complete armature tube: Code R452241	KIT: KR100KRS90-L2=2+3
4. Lower body assembly: Code R452492	

DIMENSIONS:

SOLENOID VALVE CODING WITH ACCESSORIES

21D72RRS90 - ML



COIL TYPE	POWER ABSORPTION		
	W ==	Hold VA ~	Inrush VA ~
I	12	22	30

Total separation solenoid valve 2/2 way N.C. with flow regulation Direct acting - NSF Certified

21K72KRS90-000

÷

26K72KRS90-000

PRESENTATION:

Bank S.V. for automatic drink dispensers.
Minimum operational pressure is not required.
The materials used and the tests carried out ensure maximum reliability and duration.

USE: Automatic drink dispensers

PIPES: Please turn over (A-B-D-I-L-R)

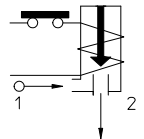
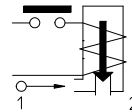
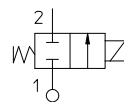
COIL: 8W - Ø 13
BDA - BDS - BSA 155°C (class F)
BDF 180°C (class H)

MOULDING AND BOBBIN ARE MADE BY 100% VIRGIN MATERIAL.

Ambient temperature:
with coil class F - 10°C + 60°C
with coil class H - 10°C + 80°C



Gaskets	Temperature		Medium
S=VMQ (silicone)	+ 2°C	+100°C	Water



Pipe	Code	Max viscosity		Ø mm	Kv l/mn	Power (watt)	Pressure		
		cSt	°E				min bar	M.O.P.D. AC bar DC bar	
See connection types overleaf (A-B-D-I-L-R)	21K72KRS90-000	-	-	9	*	8	0	0,3	0,3
	22K72KRS90-000								
	23K72KRS90-000								
	24K72KRS90-000								
	25K72KRS90-000								
26K72KRS90-000									

* FLOW RATE WITH HEAD OF 80 mm = 2,5 l/min.

NSF CERTIFIED

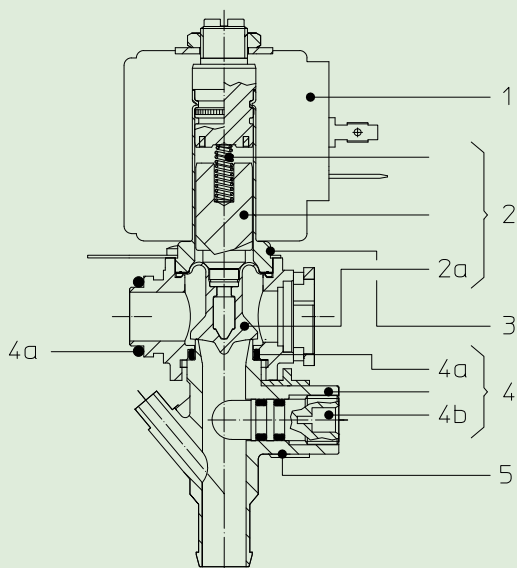


MATERIALS:

Body	PSU (Polysulphone)
Lower body	PSU (Polysulphone)
Lower body clamping device	PA (Polyammide)
Armature tube	Brass - UNI EN 12164 CW614N
Fixed core	Stainless steel AISI series 400
Plunger	Stainless steel AISI series 400
Phase displacement ring	Copper - Cu 99,9%
Spring	Stainless steel AISI series 300
Bellow membrane	Standard: S = VMQ On request W = MFQ

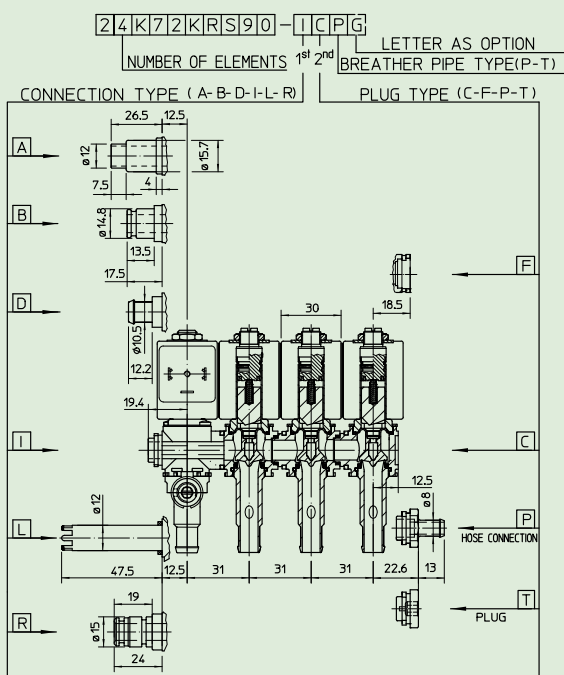
SPARE PARTS:

- | | |
|---|--|
| 1. Coil:
See coils list | 4b. Flow setting screw with O-Ring:
Code R452226 |
| 2. Complete plunger:
Cod. R452491/S | 5. Lower body clamping device:
Code R452259 |
| 2a. Bellow membrane:
Code R452489/S | KIT:
KR130KRS90-L3=2+3 |
| 3. Complete armature tube:
Code R452197 | |
| 4. Lower body assembly:
Code R452493 | |
| 4a. Gasket O-Ring:
Code R990052/S | |

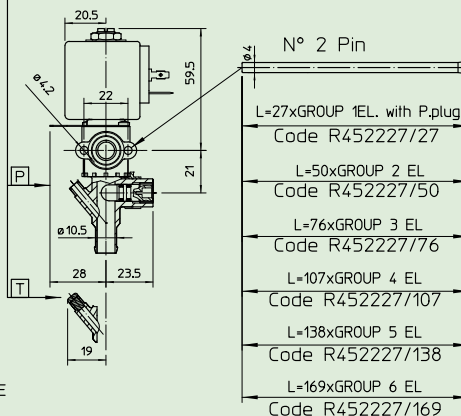


DIMENSIONS:

SOLENOID VALVE CODING WITH ACCESSORIES



- KEY :**
- A = Connection $\varnothing 15,7 \times 22,5$
 - B = Connection $\varnothing 15 \times 13,5$ with OR
 - C = S.V. body-closed
 - D = Hose connection $\varnothing 10,5 \times 12,2$
 - F = S.V. body-open-female bayonet joint
 - G = Selflocking gasket (R451856) for connection type "A" only
 - I = Male bayonet joint
 - L = Connection $\varnothing 12 \times 47,5$
 - P = Hose connection
 - R = Quick coupling joint $\varnothing 15 \times 19$
 - T = Polysulphone plug for F joint
 - T = Silicone plug for breather pipe



- FOR LEFT INLET INDICATE THE LETTER CORRESPONDING TO CONNECTION TYPE IN THE FIRST BOX, AND TO PLUG TYPE IN THE SECOND BOX.

- FOR RIGHT INLET INDICATE THE LETTER CORRESPONDING TO CONNECTION TYPE IN THE SECOND BOX, AND TO PLUG TYPE IN THE FIRST BOX.

COIL TYPE	POWER ABSORPTION		
	W	Hold VA ~	Inrush VA ~
B	8	14,5	25

Total separation solenoid valve 2/2 way N.C. with flow regulation Direct acting - NSF Certified

21K72RRS90-000

÷

26K72RRS90-000

PRESENTATION:

Bank S.V. for automatic drink dispensers.
Minimum operational pressure is not required.
The materials used and the tests carried out ensure maximum reliability and duration.

USE: Automatic drink dispensers

PIPES Please turn over (A-B-D-I-L-R)

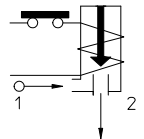
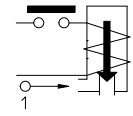
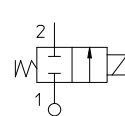
COIL: 12W ED 50% - Ø 10
ICA 155°C (class F)

MOULDING AND BOBBIN ARE MADE BY 100% VIRGIN MATERIAL.

Ambient temperature - 10°C + 60°C



Gaskets	Temperature		Medium
S=VMQ (silicone)	+ 2°C	+100°C	Water



Pipe	Code	Max viscosity		Ø mm	Kv l/mn	Power (watt)	Pressure		
		cSt	°E				min bar	M.O.P.D. AC bar DC bar	
See connection types overleaf (A-B-D-I-L-R)	21K72RRS90-000	-	-	9	*	12 ED 50%	0	0,3	0,3
	22K72RRS90-000								
	23K72RRS90-000								
	24K72RRS90-000								
	25K72RRS90-000								
26K72RRS90-000									

* FLOW RATE WITH HEAD OF 80 mm = 2,5 l/min.

NSF CERTIFIED



Note

Available on request and with minimum quantities.

We reserves the right to carry out technical and aesthetic modifications without prior notification

