

## Valve 2/2 way - angle seat/process valve Normally Closed - Flow direction below the seat - pneumatically operated

21IA4T15NC2

÷

21IA9T50NC2

### PRESENTATION:

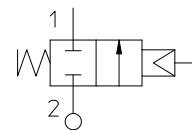
- High flow rate due to the angle seat configuration.
- Anti-water hammer feature with the fluid entry below the seat.
- Electrical operation is easy with the addition of a solenoid pilot.
- Stainless steel body and corrosion resistant actuator.
- The pneumatic actuator can be rotated through 360 degrees.
- Optical position indicator.
- Internal seals are self adjusting for long life.
- Easily convertible from N.C. to N.O. or double acting.
- Universal mounting - any mounting orientation is acceptable.

**USE:** Automation, Heating, Water, Hot water, Steam (180°C), Aggressive and food fluids

**PIPES:** 1/2 NPT - 2 NPT

### VALVE FEATURES:

Fluid Temperature	- 10°C + 180°C
Ambient temperature	- 10°C + 60°C
Material	Stainless steel AISI series 316
Seal	PTFE
Packing gland	PTFE, FKM



### PILOT ACTUATOR FEATURES:

Fluid	Dry Air or lubricated, gas and neutral fluids
Fluid Temperature	max + 60°C
Body	Polyamide 66 with 30% glass fibre
Gaskets	NBR
Actuator	Ø 70

Pipe ANSI/ASME BI.20.1	Code	Ø mm	Kv l/mn	Actuator pilot pressure (bar)		Differential pressure (bar)		Max. allowable pressure PS (bar)	Weight Kg
				min	max	min	max		
1/2 NPT	21IA4T15NC2	15	80	4	10	0	16	40	1,4
3/4 NPT	21IA5T20NC2	20	150				10		1,5
1 NPT	21IA6T25NC2	25	190				10		1,8
1 1/4 NPT	21IA7T32NC2	32	340				7	25	2,4
1 1/2 NPT	21IA8T40NC2	40	430				4,5		2,7
2 NPT	21IA9T50NC2	50	620				3	16	3,9

**CE**

**CE Approval**

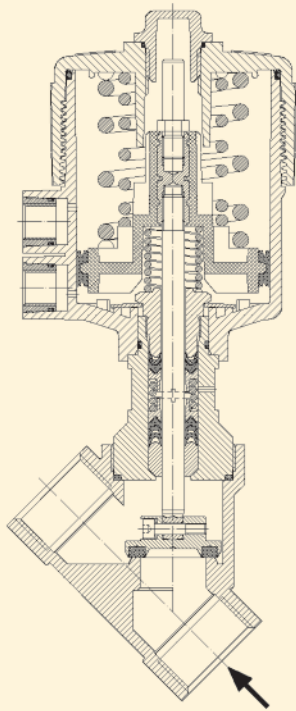
(Pressure Equipment Directive 97/23/CE)

for S.V. 21IA7 ÷ 21IA9

### Note

Available on request pilot Valve 31A2AV20+BDA (see catalogue page)  
Together with male thread nipple male 1/4 NPT - 1/4 NPT  
Material compatibility with the fluids to be checked.

The "ODE" reserves the right to carry out technical and aesthetic modifications without prior notification.



### DIMENSIONS:

Pipe ANSI/ASME Bl.20.1	A mm	B mm	C mm	D mm	E mm	H mm	L mm	T mm
1/2 NPT	206,8	SW 27	178,7	15,4	SW 30	163,3	65	17
3/4 NPT	211,7	SW 32	188,6	21,9	SW 36	166,7	75,5	19
1 NPT	220,1	SW 41	197,8	25,1	SW 36	172,7	90	21
1 1/4 NPT	235,9	SW 50	212,3	28,5	SW 41	183,8	110	24
1 1/2 NPT	238,9	SW 55	217,0	31,0	SW 41	186	122	25,2
2 NPT	247,8	SW 70	229,7	37,5	SW 41	192,2	151	28,5

